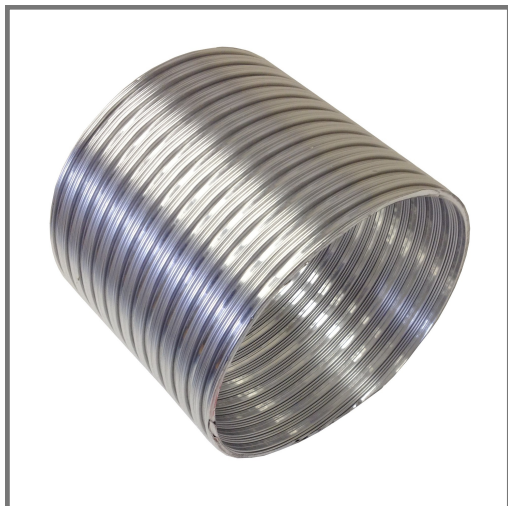


Ducting Accessories

Semi-Rigid Flexible Aluminium Hose

Flexible Ducting



Key Features

The Semi-Rigid Flexible Aluminium ducting is manufactured with 98% Pure Aluminium. Strong, Flexible and easy to connect to circular ducting with no special tools required. The Aluminium hose can be permanently formed into various shapes whilst maintaining a round tube.

Temperature Range: -30/+250°C

Maximum Air Velocity: 20m/s

Maximum Positive Working Pressure: 2000Pa

Dimensions and Weight (Average)

Product Codes

System Sizing	Manrose Code	Duct Length (uncompressed)
4"/100mmØ	1015	380mm
4"/100mmØ	1000	1500mm
4"/100mmØ	1010	3000mm
5"/125mmØ	1016	380mm
5"/125mmØ	1011	1500mm
5"/125mmØ	1012	3000mm
6"/150mmØ	1300	380mm
6"/150mmØ	1013	1500mm
6"/150mmØ	1014	3000mm
9"/230mmØ	1301	400mm
12"/300mmØ	1299	400mm

System Sizing	Inner Diameter (compressed)	Outer Diameter (uncompressed)	Weight Per 1m
4"/100mmØ	102mm	111mm	0.173kg
5"/125mmØ	125mm	135mm	0.207kg
6"/150mmØ	155mm	164mm	0.240kg
9"/230mmØ	240mm	255mm	400mm only - 0.2kg
12"/300mmØ	300mm	305mm	400mm only - 0.25kg

Mechanical Properties*

Product	Rpm N/mm ²	R0.2 N/mm ²	Elongation (%)
Semi-Rigid Aluminium	115.8	74.8	28.9
Semi-Rigid Aluminium	117.6	80.4	25.0

*There are two measurements to show the tolerances of the material

Chemical Composition/Analysis (%)*

Product	Alloy	Temper	Thickness	Width	Si	Fe	Mn	Mg	Cu	Ti	Zn	Cr
Semi-Rigid Hose	Aluminium Foil - 8150	-0-	0.10mm	60mm	0.1112	1.3690	0.3752	0.0000	0.0018	0.0050	0.0040	0.0007
Semi-Rigid Hose	Aluminium Foil - 8150	-0-	0.10mm	60mm	0.1113	1.3376	0.3725	0.0000	0.0013	0.0078	0.0073	0.0015